

SERVICE AND PARTS MANUAL FOR BLOWER MODEL

**DRS9, DRP9, DR13, DRP13,
DRS15, DRP15**

**DUPLEX REGENERATIVE
BLOWER**



AMETEK

AMETEK Dynamic Fluid Solutions
100 East Erie St., Kent, Ohio 44240
Telephone: 330-673-3452 Fax: 330-677-3306
email: dfs.information@ametek.com
internet: www.ametekdfs.com

Your Choice. Our Commitment.™

WARRANTY, INSTALLATION, MAINTENANCE AND TROUBLESHOOTING INSTRUCTIONS



AMETEK Dynamic Fluid Solutions
100 East Erie St., Kent, Ohio 44240
Telephone: 330-673-3452 Fax: 330-677-3306
email: dfs.information@ametek.com
internet: www.ametekdfs.com

1. AMETEK Rotron DR, EN and HiE regenerative direct drive blowers are guaranteed for one full year from the date of installation (limited to 18 months from the date of shipment) to the original purchaser only. Should the blower fail we will evaluate the failure. If failure is determined to be workmanship or material defect related, we will at our option repair or replace the blower.
2. AMETEK Rotron Minispiral, Revaflow, Multiflow, Nautilair, remote drive blowers, moisture separators, packaged units, CP blowers, Nasty Gas™ models and special built (EO) products are guaranteed for one full year from date of shipment for workmanship and material defect to the original purchaser only. Should the blower fail, If failure is determined to be workmanship or material defect related, we will at our option repair or replace the blower.
3. **Parts Policy** - AMETEK Rotron spare parts and accessories are guaranteed for three months from date of shipment for workmanship and material defect to the original purchaser only. If failure is determined to be workmanship or material defect related we will at our option repair or replace the part.

Corrective Action - A written report will be provided indicating reason(s) for failure, with suggestions for corrective action. Subsequent customer failures due to abuse, misuse, misapplication or repeat offense will not be covered. AMETEK Rotron will then notify you of your options. Any failed unit that is tampered with by attempting repair or diagnosis will void the warranty, unless authorized by the factory.

Terms and Conditions - Our warranty covers repairs or replacement of regenerative blowers only, and will not cover labor for installation, outbound and inbound shipping costs, accessories or other items not considered integral blower parts. Charges may be incurred on products returned for reasons other than failures covered by their appropriate warranty. Out-of-warranty product and in warranty product returned for failures determined to be caused by abuse, misuse, or repeat offense will be subject to an evaluation charge. Maximum liability will in no case exceed the value of the product purchased. Damage resulting from mishandling during shipment is not covered by this warranty. It is the responsibility of the purchaser to file claims with the carrier. Other terms and conditions of sale are stated on the back of the order acknowledgement.

Installation Instructions for SL, DR, EN, CP, and HiE Series Blowers

1. **Bolt It Down** - Any blower must be secured against movement prior to starting or testing to prevent injury or damage. The blower does not vibrate much more than a standard electric motor.
2. **Filtration** - All blowers should be filtered prior to starting. Care must be taken so that no foreign material enters the blower. If foreign material does enter the blower, it could cause internal damage or may exit at extremely high velocity.

Should excessive amounts of material pass through the blower, it is suggested that the cover(s) and impeller(s) be removed periodically and cleaned to avoid impeller imbalance. Impeller

imbalance greatly speeds bearing wear, thus reducing blower life. Disassembling the blower will void warranty, so contact the factory for cleaning authorization.

- Support the Piping** - The blower flanges and nozzles are designed as connection points only and are not designed to be support members.

Caution: Plastic piping should not be used on blowers larger than 1 HP that are operating near their maximum pressure or suction point. Blower housing and nearby piping temperatures can exceed 200°F. Access by personnel to the blower or nearby piping should be limited, guarded, or marked, to prevent danger of burns.

- Wiring** - Blowlers must be wired and protected/fused in accordance with local and national electrical codes. All blowlers must be grounded to prevent electrical shock. Slo-Blo or time delay fuses should be used to bypass the first second of start-up amperage.
- Pressure/Suction Maximums** - The maximum pressure and/or suction listed on the model label should not be exceeded. This can be monitored by means of a pressure or suction gage (available from Rotron), installed in the piping at the blower outlet or inlet. Also, if problems do arise, the Rotron Field representative will need to know the operating pressure/suction to properly diagnose the problem.
- Excess Air** - Bleed excess air off. DO NOT throttle to reduce flow. When bleeding off excess air, the blower draws less power and runs cooler.

Note: Remote Drive (Motorless) Blowlers - Properly designed and installed guards should be used on all belts, pulleys, couplings, etc. Observe maximum remote drive speed allowable. Due to the range of uses, drive guards are the responsibility of the customer or user. Belts should be tensioned using belt gauge.

Maintenance Procedure

When properly piped, filtered, and applied, little or no routine maintenance is required. Keep the filter clean. Also, all standard models in the DR, EN, CP, and HiE series have sealed bearings that require no maintenance. Bearing should be changed after 15,000 to 20,000 hours, on average. Replacement bearing information is specified on the chart below.

Bearing Part Number	Size	Seal Material	Grease	Heat Stabilized
510217 510218 510219	205 206 207	Polyacrylic	Nye Rheotemp 500 30% +/- 5% Fill	Yes – 325 F
510449 516440 516648	203 202 307	Buna N	Exxon Polyrex Grease	NO
516840 516841 516842 516843 516844 516845 516846 516847	206 207 208 210 309 310 311 313	Buna N	Exxon Polyrex Grease	NO

Troubleshooting

		POSSIBLE CAUSE	OUT OF WARRANTY REMEDY ***
IMPELLER DOES NOT TURN	Humming Sound	<ol style="list-style-type: none"> * One phase of power line not connected * One phase of stator winding open Bearings defective Impeller jammed by foreign material Impeller jammed against housing or cover ** Capacitor open 	<ol style="list-style-type: none"> Connect Rewind or buy new motor Change bearings Clean and add filter Adjust Change capacitor
	No Sound	<ol style="list-style-type: none"> * Two phases of power line not connected * Two phases of stator winding open 	<ol style="list-style-type: none"> Connect Rewind or buy new motor
IMPELLER TURNS	Blown Fuse	<ol style="list-style-type: none"> Insufficient fuse capacity Short circuit 	<ol style="list-style-type: none"> Use time delay fuse of proper rating Repair
	Motor Overheated Or Protector Trips	<ol style="list-style-type: none"> High or low voltage * Operating in single phase condition Bearings defective Impeller rubbing against housing or cover Impeller or air passage clogged by foreign material Unit operating beyond performance range Capacitor shorted * One phase of stator winding short circuited 	<ol style="list-style-type: none"> Check input voltage Check connections Check bearings Adjust Clean and add filter Reduce system pressure/vacuum Change capacitor Rewind or buy new motor
	Abnormal Sound	<ol style="list-style-type: none"> Impeller rubbing against housing or cover Impeller or air passages clogged by foreign material Bearings defective 	<ol style="list-style-type: none"> Adjust Clean and add filter Change bearings
	Performance Below Standard	<ol style="list-style-type: none"> Leak in piping Piping and air passages clogged Impeller rotation reversed Leak in blower Low voltage 	<ol style="list-style-type: none"> Tighten Clean Check wiring Tighten cover, flange Check input voltage
<p>* 3 phase units ** 1 phase units *** Disassembly and repair of new blowers or motors will void the Rotron warranty. Factory should be contacted prior to any attempt to field repair an in-warranty unit.</p>			

Blower Disassembly:

WARNING: Attempting to repair or diagnose a blower may void Rotron's warranty. It may also be difficult to successfully disassemble and reassemble the unit.

- 1) Disconnect the power leads. **CAUTION:** Be sure the power is disconnected before doing any work whatsoever on the unit.
- 2) Remove or separate piping and/or mufflers and filters from the unit.
- 3) Remove the cover bolts and then the cover. **NOTE:** Some units are equipped with seals. It is mandatory that these seals be replaced once the unit has been opened.
- 4) Remove the impeller bolt and washers and then remove the impeller. **NOTE:** Never pry on the edges of the impeller. Use a puller as necessary.
- 5) Carefully note the number and location of the shims. Remove and set them aside. **NOTE:** If the disassembly was for inspection and cleaning the unit may now be reassembled by reversing the above steps. If motor servicing or replacement and/or impeller replacement is required the same shims may not be used. It will be necessary to re-shim the impeller according to the procedure explained under assembly.

- 6) Remove the housing bolts and remove the motor assembly (arbor/housing on remote drive models).
- 7) Arbor disassembly (Applicable on remote drive models only):
 - a) Slide the bearing retraining sleeve off the shaft at the blower end.
 - b) Remove the four (4) screws and the bearing retaining plate from the blower end.
 - c) Lift the shaft assembly far enough out of the arbor to allow removal of the blower end snap ring.
 - d) Remove the shaft assembly from the arbor.
 - e) If necessary, remove the shaft dust seal from the pulley end of the arbor.

Muffler Material Replacement:

- 1) Remove the manifold cover bolts and them manifold cover.
- 2) The muffler material can now be removed and replaced if necessary. On blowers with fiberglass acoustical wrap the tubular retaining screens with the fiberglass matting before sliding the muffler pads over the screens.
- 3) Reassemble by reversing the procedure.

NOTE: On DR068 models with tubular mufflers it is necessary to remove the cover and impeller accessing the muffler material from the housing cavity.

Blower Reassembly:

- 1) Place the assembled motor (assembled arbor assembly for remote drive models) against the rear of the housing and fasten with the bolts and washer.
- 2) To ensure the impeller is centered within the housing cavity re-shim the impeller according to the procedure outlined below.
- 3) If blower had a seal replace the seal with a new one.
- 4) Place the impeller onto the shaft making sure the shaft key is in place and fasten with the bolt, washer and spacer as applicable. Torque the impeller bolt per the table below. Once fastened carefully rotate the impeller to be sure it turns freely.
- 5) Replace the cover and fasten with bolts.
- 6) Reconnect the power leads to the motor per the motor nameplate.

Bolt Size	Torque Pound-Force-Foot
1/4-20	6.25 +/- 0.25
5/16-18	11.5 +/- 0.25
3/8-16	20.0 +/- 0.5
1/2-13	49.0 +/- 1
5/8 -11	90.0 +/- 2

Impeller Shimming Procedure:

WARNING: This unit may be difficult to shim. Extreme care may be exercised.

Tools Needed: Machinist's Parallel Bar
Vernier Caliper with depth measuring capability
Feeler gauges or depth gauge

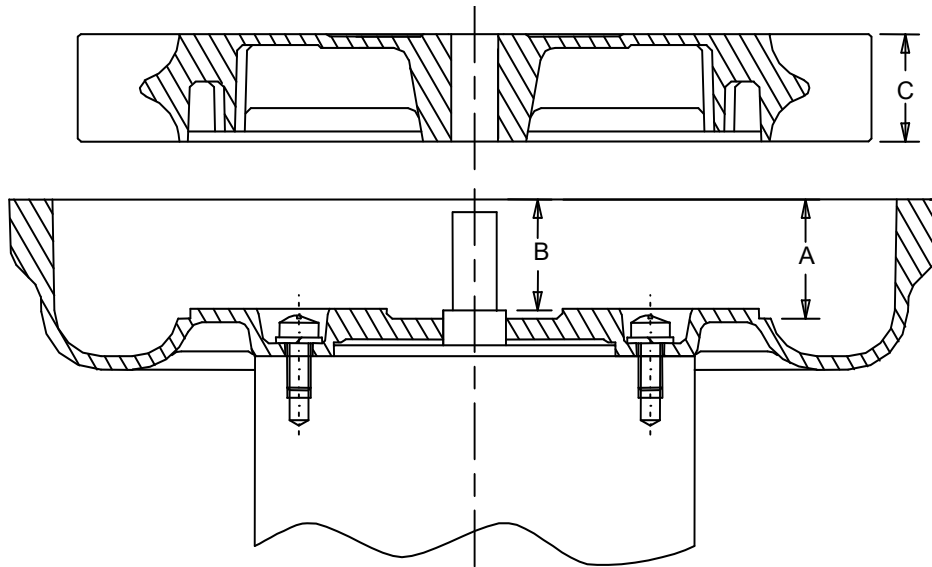
Measure the Following:

- Distance from the flange face to the housing (A)
- Distance from the flange face to the motor shaft shoulder (B)
- Impeller Thickness (C)

Measurements (A) and (B) are made by laying the parallel bar across the housing flange face and measuring to the proper points. Each measurement should be made at three points, and the average of the readings should be used.

$$\text{Shim Thickness} = B - (A+C)/2$$

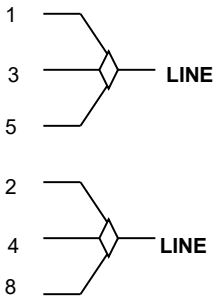
After the impeller installation (step #4 above) the impeller/cover clearance can be checked with feeler gauges, laying the parallel bar across the housing flange face. This clearance should nominally be $(A-C)/2$.



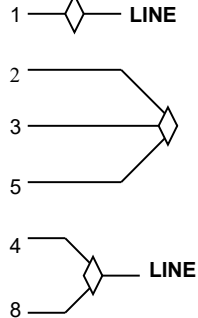
WIRING DIAGRAMS, TEFC and ODP MOTORS

A. 1Ø, 6 WIRE

115 VAC



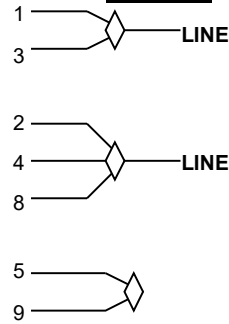
230 VAC



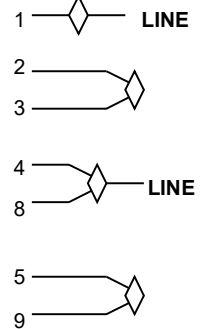
INTERCHANGE LEADWIRES 5 & 8 to REVERSE ROTATION

B. 1Ø, 7 WIRE

115 VAC



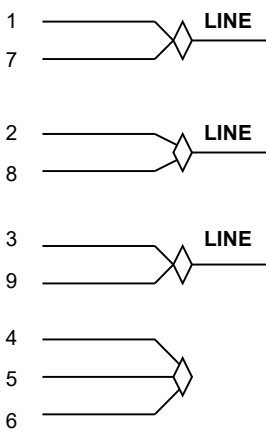
230 VAC



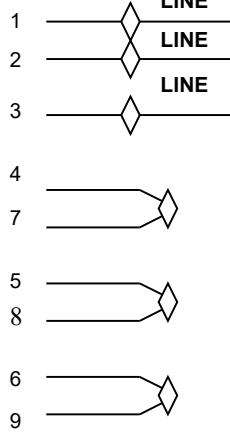
INTERCHANGE LEADWIRES 5 & 8 to REVERSE ROTATION

C. 3Ø, 9 WIRE

230 VAC



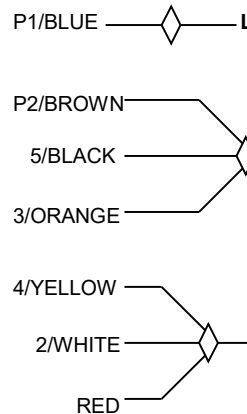
460 VAC



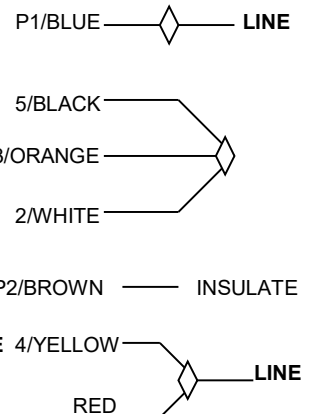
INTERCHANGE ANY TWO LEAD LINES TO REVERSE ROTATION

D. 1Ø, EMERSON 1/8 HP MOTOR

115 VAC



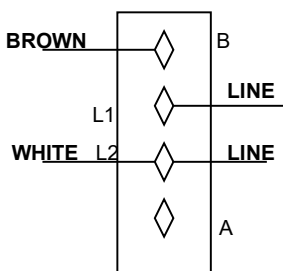
230 VAC



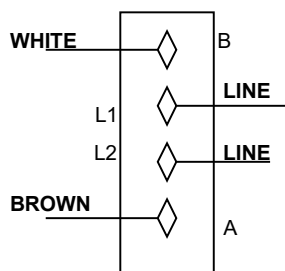
INTERCHANGE RED AND BLACK TO REVERSE ROTATION

E. 1Ø, SPA DUTY WITH TERMINAL STRIPS

LOW 115 VAC

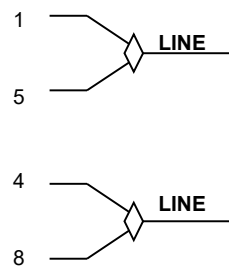


HIGH 230 VAC



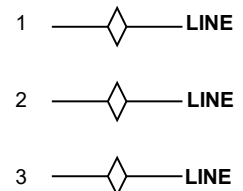
F. 1Ø, 230 VAC

SINGLE VOLTAGE



INTERCHANGE LEAD WIRES 5 & 8 TO REVERSE ROTATION

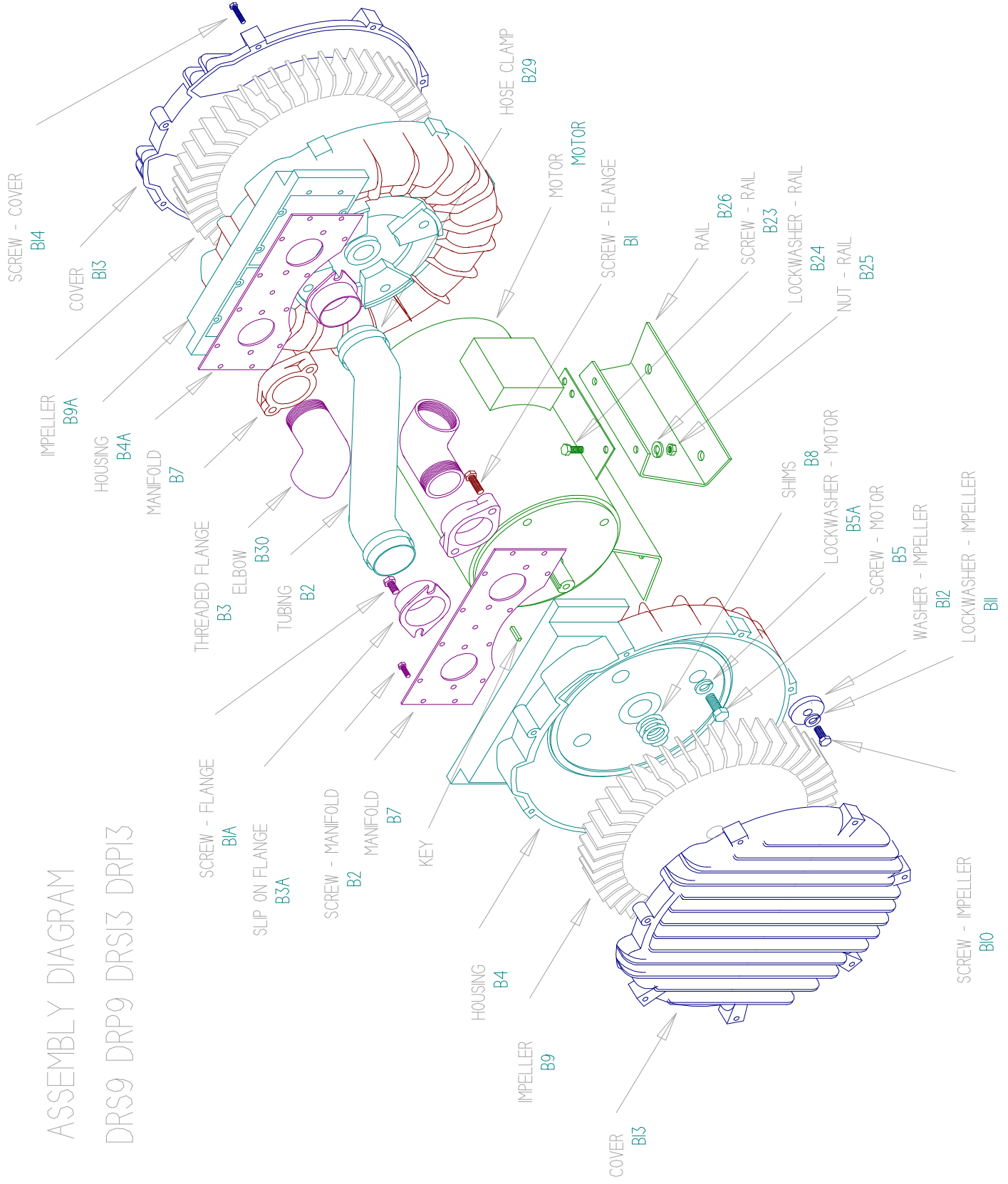
G. 3Ø, 575 VAC



INTERCHANGE ANY TWO LEAD LINES TO REVERSE ROTATION

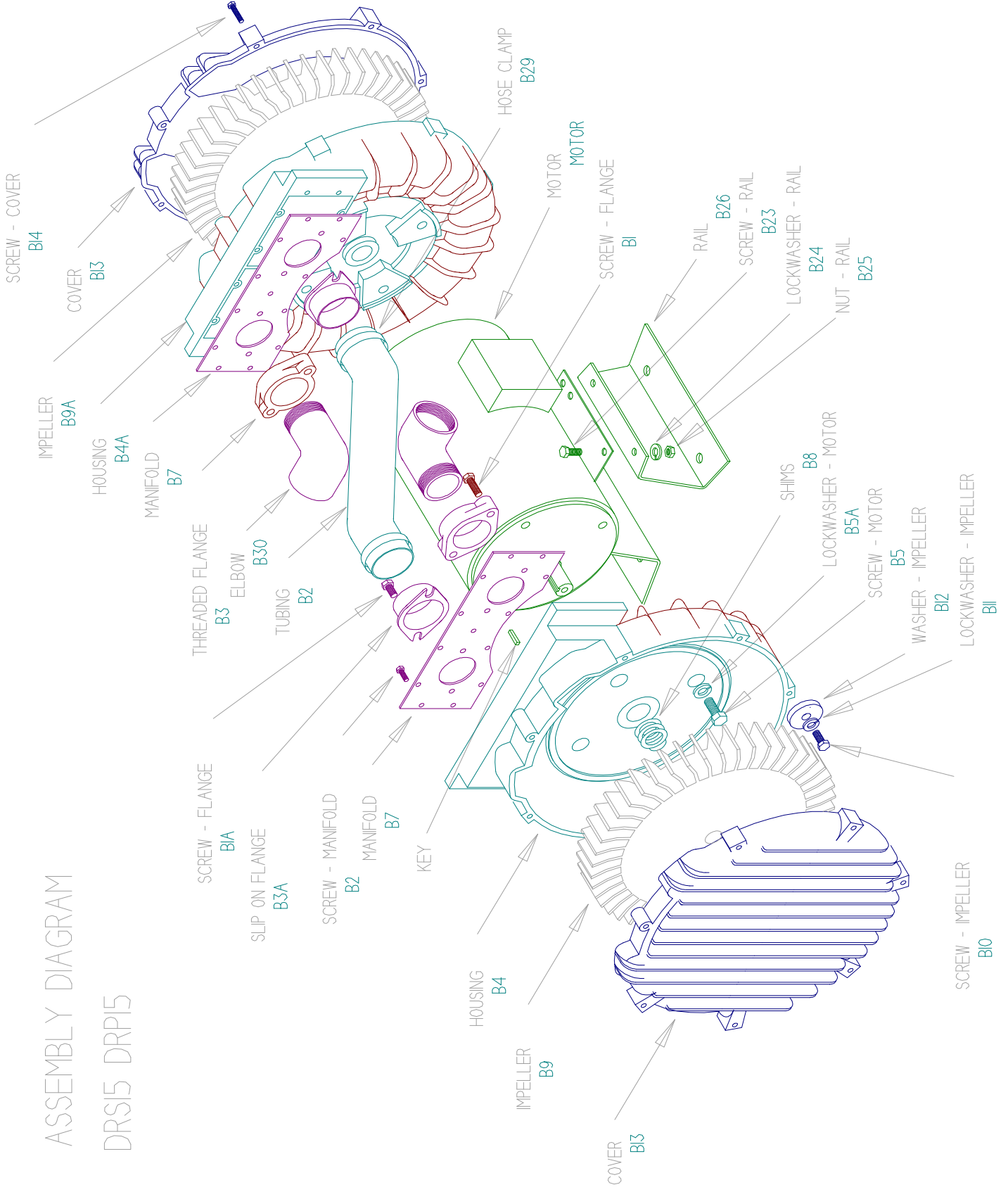
ASSEMBLY DIAGRAM

DRS9 DRP9 DRS13 DRP13



ASSEMBLY DIAGRAM

DRS15 DRP15



DRS/P 9/13

Service and Parts Manual

Model:

Part No.:

Parts Breakdown

DRS9	DRP9	DRS13	DRP13	DRP13
037032	037033	036710	036711	081801
037041	036275	036922	036712	081802
036514	037040	036709	036923	081804
	036276	036928	036924	081805
	036512	036707	036707	081798
	036513	036708	036708	081797
		036929	036929	
		036930	036930	

Item No.	Qty.	Req'd	Description					
M3	2		Key Motor Shaft	511532	511532	511532	511532	511532
B1	4		Screw, Flange	155025	155025 (8 pcs)	155025 (8 pcs)	155025	155171
B1A	4		Screw, Hose Flange	155171	155171	155171	155171	155025
B2	0		Screw, Manifold	Not Used	Not Used	Not Used	Not Used	Not Used
B3	2		Flange	511614	511614	511516	511516	552436
B3A	2		Flange, Hose	511296	511296	511531	511531	552437
B4	1		Housing (left side)	551557	551557	See Next Page	See Next Page	See Next Page
B4A	1		Housing (right side facing T-box)	551558	551558	See Next Page	See Next Page	See Next Page
B5	8		Screw, Hsg /Motor	155034	155034	551631	551631	551631
B6			Muffler Material	Not Used	Not Used	Not Used	Not Used	Not Used
B7	0		Manifold Plate	Not Used	Not Used	Not Used	Not Used	Not Used
B8	*		Shim .002"	511547	511547	511547	511547	511547
	*		Shim .005"	511548	511548	511548	511548	511548
	*		Shim .010"	511549	511549	511549	511549	511549
	*		Shim .020"	511550	511550	511550	511550	511550
	*		Shim .030"	Not Used	Not Used	Not Used	Not Used	Not Used
B9	1		Impeller	515249	515249	515270	515270	552431
B9A	1		Impeller Assembly, Reverse	516187	516187	516218	516218	552431
B10	2		Bolt, Impeller	120210	120210	140015	140015	140015

* As needed

B11	2	Lockwasher, Impeller	251788	251788	251788	251788	251788	251788	251788	251788	251788	251788	251788
B12	2	Washer, Impeller	511529	511529	511529	511529	511529	511529	511529	511529	511529	511529	511529
B13	2	Cover	515247	515247	515247	515247	515247	515247	515247	515247	515247	515247	515247
B14	16	Screw, Cover	140016	140016	140016	140016	140016	140016	140016	140016	140016	140016	140016
B15	2	Eye Bolt, Housing	Not Used	Not Used	Not Used	Not Used	Not Used	Not Used	Not Used	Not Used	Not Used	Not Used	Not Used
B16	2	Spacer, Impeller Bolt	515555	515555	515555	515555	515555	515555	515555	515555	515555	515555	515555
B17		Lockwasher, Housing	Not Used	Not Used	Not Used	Not Used	Not Used	Not Used	Not Used	Not Used	Not Used	Not Used	Not Used
B21		Heat Slinger	Not Used	Not Used	Not Used	Not Used	Not Used	Not Used	Not Used	Not Used	Not Used	Not Used	Not Used
B22		Guard Heat Slinger	Not Used	Not Used	Not Used	Not Used	Not Used	Not Used	Not Used	Not Used	Not Used	Not Used	Not Used
		Screw Guard	Not Used	Not Used	Not Used	Not Used	Not Used	Not Used	Not Used	Not Used	Not Used	Not Used	Not Used
B23	4	Bolt Mounting Rail	120255	120255	120255	155025 (8 pcs)	155025 (8 pcs)	155025 (8 pcs)	155025 (8 pcs)	155025 (8 pcs)	155025 (8 pcs)	155025 (8 pcs)	155025 (8 pcs)
B24	4	Washer	155091	155091	155091	155091 (8 pcs)	155091 (8 pcs)	155091 (8 pcs)	155091 (8 pcs)	155091 (8 pcs)	155091 (8 pcs)	155091 (8 pcs)	155091 (8 pcs)
B24A	4	Lockwasher Rail	251787	251787	251787	251787	251787	251787	251787	251787	251787	251787	251787
B25	4	Nut Rail	251789	251789	251789	251789	251789	251789	251789	251789	251789	251789	251789
B26	2	Rail Mounting	510760	510760	510760	510760	510760	510760	510760	510760	510760	510760	510760
B29	4	Clamp Hose	155229 (8 pcs)	155229 (8 pcs)	155229 (8 pcs)	155229 (8 pcs)	155229 (8 pcs)	155229 (8 pcs)	155229 (8 pcs)	155229 (8 pcs)	155229 (8 pcs)	155229 (8 pcs)	155229 (8 pcs)
B30	2	Elbow Connection	120276	120276	120276	140021	140021	140021	140021	140021	140021	140021	140021
B31	1	Muffler	515185 (2 pcs)	515185 (2 pcs)	515185 (2 pcs)	515185 (2 pcs)	515185 (2 pcs)	515185 (2 pcs)	515185 (2 pcs)	515185 (2 pcs)	515185 (2 pcs)	515185 (2 pcs)	515185 (2 pcs)
B32	1	Hose, Crossover	511298 (2 pcs)	511297 (2 pcs)	511297 (2 pcs)	511297 (2 pcs)	511297 (2 pcs)	511297 (2 pcs)	511297 (2 pcs)	511297 (2 pcs)	511297 (2 pcs)	511297 (2 pcs)	511297 (2 pcs)
	1	Tee	Not Used	511295	511295	Not Used	Not Used	Not Used	Not Used	Not Used	Not Used	Not Used	Not Used
		Bolt, Motor/Muffler	Not Used	Not Used	Not Used	Not Used	Not Used	Not Used	Not Used	Not Used	Not Used	Not Used	Not Used
		Lockwasher, Motor/Muffler	Not Used	Not Used	Not Used	Not Used	Not Used	Not Used	Not Used	Not Used	Not Used	Not Used	Not Used
		Washer, Motor/Muffler	Not Used	Not Used	Not Used	Not Used	Not Used	Not Used	Not Used	Not Used	Not Used	Not Used	Not Used
		Spacer, Motor/Muffler	Not Used	Not Used	Not Used	Not Used	Not Used	Not Used	Not Used	Not Used	Not Used	Not Used	Not Used

Model	Part #	Motor	Wiring Diagram	Specific Parts	Bearing, Rear (M1)	Bearing, Impeller End (M1)
DRS9BM72	037032	511573	C			
DRS9BM86	037041	515566	G			
DRS9BL72	036514	515565	C			

* As needed

DRP9BM72C	037033	511573	C		516844	516844
DRP9BM72D	036275					
DRP9BM86C	037040	515566	G			
DRP9BM86D	036276					
DRP9BL72C	036512	515565	C			
DRP9BL72D	036513					
DRS13BP72	036710	510464	C	B4 551630	516846	516846
DRS13BP86	036922	515199	G	B4A 551629		
DRS13BM72	036709	511573	C	B4 515274	516844	516844
DRS13BM86	036928	515566	G	B4A 515275		
DRP13BP72D	036712	510464	C	B4 551630	516846	516846
DRP13BP72C	036711			B4A 551629		
DRP13BM72D	036707	511573	C	B4 515274	516844	516844
DRP13BM72C	036708			B4A 515275		
DRP13BP86D	036924	515199	G	B4 551630	516846	516846
DRP13BP86C	036923			B4A 551629		
DRP13BM86D	036930	515566	G	B4 515274	516844	516844
DRP13BM86C	036929			B4A 515275		
DRP13BP72D	081802	510464	C	B4 551630	516846	516846
DRP13BP72C	081801			B4A 551629		
DRP13BM72D	081797	511573	C		516844	516844
DRP13BM72C	081798			B4 551581 B4A 551628		
DRP13BP86D	tbd	515199	G	B4 551630	516846	516846
DRP13BP86C	081804			B4A 551629		
DRP13BM86D	081805	515566	G		516844	516844
DRP13BM86C	tbd			B4 551581, B4A 551628		
DRS13BP72	081800	510464	C	B4 551630	516846	516846
				B4A 551629		
DRS13BM72	081799	511573	C	B4 551581, B4A 551628	516844	516844

* As needed

DRS13
 081799
 081800

Item No.	Qty.	Req'd	Description	
M3	2		Key Motor Shaft	511532
B1	4		Screw, Flange	155171
B1A	4		Screw, Hose Flange	155025
B2	0		Screw, Manifold	Not Used
B3	2		Flange	552436
B3A	2		Flange, Hose	552437
B4	1		Housing (left side)	See Next Page
B4A	1		Housing (right side facing T-box)	See Next Page
B5	8		Screw, Hsg /Motor	551631
B6			Muffler Material	Not Used
B7	0		Manifold Plate	Not Used
B8	*		Shim .002"	511547
	*		Shim .005"	511548
	*		Shim .010"	511549
	*		Shim .020"	511550
	*		Shim .030"	Not Used
B9	1		Impeller	552431
B9A	1		Impeller Assembly, Reverse	552431
B10	2		Bolt, Impeller	140015

* As needed

	251788
	511529
	515359
	140016
	Not Used
	Not Used
	Not Used
	Not Used
	Not Used
	Not Used
	155025
	120234
	251788
	120206
	551584
	155231
	155064
	516264
	552438
	516084
	Not Used
	Not Used
	Not Used
	Not Used

B11	2	Lockwasher, Impeller
B12	2	Washer, Impeller
B13	2	Cover
B14	16	Screw, Cover
B15	2	Eye Bolt, Housing
B16	2	Spacer, Impeller Bolt
B17		Lockwasher, Housing
B21		Heat Slinger
B22		Guard Heat Slinger
		Screw Guard
B23	4	Bolt Mounting Rail
B24	8	Washer
B24A	4	Lockwasher Rail
B25	4	Nut Rail
B26	2	Rail Mounting
B29	4	Clamp Hose
B30	2	Elbow Connection
B31	1	Muffler
B32	1	Hose, Crossover
	1	Tee
		Bolt, Motor/Muffler
		Lockwasher, Motor/Muffler
		Washer, Motor/Muffler
		Spacer, Motor/Muffler

2)	
----	--

* As needed

--	--	--	--	--	--	--	--	--	--	--	--	--	--	--

DRS/P 15

Service and Parts Manual

Model:

Part No.:

Parts Breakdown

DRS15 037244	DRS15 036971	DRP15 037243	DRP15 036970
036960		036956	036969
036961		036957	
037317		036958	
		036959	
		037242	
OBSOLETE	OBSOLETE	OBSOLETE	OBSOLETE

Item No.	Qty.	Req'd	Description	DRS15	DRP15	DRP15
M3	2		Key Motor Shaft	155066	511532	155066 511532
B1	4		Screw, Flange	155025	155025	155025 155025
B1A	4		Screw, Hose Flange	155171	155171	155171 155171
B2	36		Screw, Manifold	120254	120254	120254 120254
B3	2		Flange	515985	515985	515985 515985
B3A	2		Flange, Hose	515986	515986	515986 515986
B4	1		Housing (left side)	515970	516239	515970 516239
B4A	1		Housing (right side facing T-box)	515971	515974	515971 515974
B5	8		Screw, Hsg /Motor	See Next Page	120205	See Next Page 140014
B6			Muffler Material	Not Used	Not Used	Not Used Not Used
B7	2		Manifold Plate	515988	515988	515988 515988
B8	*		Shim .002"	515991	511547	515991 511547
	*		Shim .005"	515992	511548	515992 511548
	*		Shim .010"	515993	511549	515993 511549
	*		Shim .020"	515994	511550	515994 511550
	*		Shim .030"	Not Used	Not Used	Not Used Not Used
B9	1		Impeller	515509	515683	515509 515683
B9A	1		Impeller Assembly, Reverse	515669	515684	515669 515684
B10	2		Bolt, Impeller	155068	155025	155068 155025
B11	2		Lockwasher, Impeller	251788	251788	251788 251788
B12			Washer, Impeller	Not Used	Not Used	Not Used Not Used
B13	2		Cover	515910	515910	515910 515910
B14	16		Screw, Cover	155069	155069	155069 155069
B15	2		Eye Bolt, Housing	140019	140019	140019 140019
B16	2		Spacer, Impeller Bolt	515990	515990	515990 515990
B17			Lockwasher, Housing	Not Used	Not Used	Not Used Not Used
B21	2		Heat Slinger	Not Used	Not Used	Not Used 511527

* As needed

B22	Guard Heat Slinger	Not Used	Not Used	Not Used	Not Used	Not Used	Not Used
	Screw Guard	Not Used	Not Used	Not Used	Not Used	Not Used	Not Used
B23	4 Bolt Mounting Rail	155075	120256	155075	155075	120256	120256
B24	Washer	Not Used	Not Used	Not Used	Not Used	Not Used	Not Used
B24A	4 Lockwasher Rail	120338	251788	120338	120338	251788	251788
B25	4 Nut Rail	155073	155070	155073	155073	155070	155070
B26	2 Rail Mounting	516255	516242	516255	516255	516242	516242
B29	Clamp Hose	(4 pcs) 155231	(4 pcs) 155231	(8 pcs) 155231	(8 pcs) 155231	(8 pcs) 155231	155231
B30	2 Elbow Connection	155064	155064	155064	155064	155064	155064
B31	Muffler	(1 pc) 516264	(1 pc) 516264	(2 pcs) 516264	(2 pcs) 516264	(2 pcs) 516264	(2 pcs) 516264
B32	Hose, Crossover	(1 pc) 516170	(1 pc) 516170	(2 pcs) 516170	(2 pcs) 516169	(2 pcs) 516169	(2 pcs) 516169
	Tee	Not Used	Not Used	Not Used	516084	516084	516084
	Bolt, Motor/Muffler	Not Used	Not Used	Not Used	Not Used	Not Used	Not Used
	Lockwasher, Motor/Muffler	Not Used	Not Used	Not Used	Not Used	Not Used	Not Used
	Washer, Motor/Muffler	Not Used	Not Used	Not Used	Not Used	Not Used	Not Used
	Spacer, Motor/Muffler	Not Used	Not Used	Not Used	Not Used	Not Used	Not Used

Model	Part No.	Motor	Wiring Diagram	Specific Parts	Bearing, Rear (M1)	Bearing, Impeller End
DRS15BQ72	037244	516606	C	B5 155434 8 Pcs		
DRS15EE72	036960	516101	C	B5 155074 8 Pcs	516846	516846
DRS15BP72	036971	510464	C			
DRS15EE86	036961	516102	G	B5 155074 8 Pcs		
DRP15BQ72C	037243	516606	C	B5 155434 8 Pcs		
DRP15BQ72D	037242					
DRP15EE72C	036956			B5 155434 8 Pcs		
DRP15EE72D	036958	516101	C	B5 155074 8 Pcs	516846	516846
DRP15EE86C	036957	516102	G	B5 155074 8 Pcs		
DRP15EE86D	036959					
DRP15BP72C	036970	510464	C			
DRP15BP72D	036969				516846	516846

DRS/P 15
Service and Parts Manual
 Model:
 Part No.:

DRS15	081502

Parts Breakdown

DRP15	081499
	081629
	081500
	081501

Item No.	Qty. Req'd	Description	
M3	2	Key Motor Shaft	155066
B1	6	Screw, Flange	140016
B1A	6	Screw, Hose Flange	155128
B2		Screw, Manifold	Not Used
B3	2	Flange	529912
B3A	2	Flange, Hose	552359
B4	1	Housing (left side)	552311
B4A	1	Housing (right side facing T-box)	552311
B5	8	Screw, Hsg /Motor	155434
B6		Muffler Material	Not Used
B7		Manifold Plate	Not Used
B8	*	Shim .002"	515991
	*	Shim .005"	515992
	*	Shim .010"	515993
	*	Shim .020"	515994
	*	Shim .030"	Not Used
B9	1	Impeller	515509
B9A	1	Impeller Assembly, Reverse	515669
B10	2	Bolt, Impeller	155068
B11	2	Lockwasher, Impeller	251788
B12		Washer, Impeller	Not Used
B13	2	Cover	515910
B14	16	Screw, Cover	155069
B15		Eye Bolt, Housing	Not Used
B16	2	Spacer, Impeller Bolt	515990
B17		Lockwasher, Housing	Not Used
B21	2	Heat Slinger	Not Used
B22		Guard Heat Slinger	Not Used
		Screw Guard	Not Used
B23	4	Bolt Mounting Rail	155075

* As needed

B24	4	Washer	155091	155091	
B24A	4	Lockwasher Rail	120338	120338	
B25	4	Nut Rail	155073	155073	
B26	2	Rail Mounting	516255	516255	
B29		Clamp Hose	(4 pcs) 155231	(8 pcs) 155231	
B30	2	Elbow Connection	155064	155064	
B31		Muffler	(1 pc) 516264	(2 pcs) 516264	
B32		Hose, Crossover	(1 pc) 552361	(2 pcs) 552360	
		Tee	Not Used	516084	
		Bolt, Motor/Muffler	Not Used	Not Used	
		Lockwasher, Motor/Muffler	Not Used	Not Used	
		Washer, Motor/Muffler	Not Used	Not Used	
		Spacer, Motor/Muffler	Not Used	Not Used	

Model	Part No.	Motor	Wiring Diagram	Specific Parts	Bearing, Rear (M1)	Bearing, Impeller End
DRS15BQ72	081502	516606	C			
DRP15BQ72C	081501	516606	C		516846	516846
DRP15BQ72D	081500					
DRP15EE72C	081499	516101	C			
DRP15EE72D	081629					