

# **SERVICE AND PARTS MANUAL FOR BLOWER MODEL**

**DR6, 858, 909, 979, 14**

## **DIRECT DRIVE REGENERATIVE BLOWER**



**AMETEK**

AMETEK Dynamic Fluid Solutions  
100 East Erie St., Kent, Ohio 44240  
Telephone: 330-673-3452 Fax: 330-677-3306  
email: [dfs.information@ametek.com](mailto:dfs.information@ametek.com)  
internet: [www.ametekdfs.com](http://www.ametekdfs.com)

**Your Choice. Our Commitment.™**

# WARRANTY, INSTALLATION, MAINTENANCE AND TROUBLESHOOTING INSTRUCTIONS



AMETEK Dynamic Fluid Solutions  
100 East Erie St., Kent, Ohio 44240  
Telephone: 330-673-3452 Fax: 330-677-3306  
email: [dfs.information@ametek.com](mailto:dfs.information@ametek.com)  
internet: [www.ametekdfs.com](http://www.ametekdfs.com)

1. AMETEK Rotron DR, EN and HiE regenerative direct drive blowers are guaranteed for one full year from the date of installation (limited to 18 months from the date of shipment) to the original purchaser only. Should the blower fail we will evaluate the failure. If failure is determined to be workmanship or material defect related, we will at our option repair or replace the blower.
2. AMETEK Rotron Minispiral, Revaflow, Multiflow, Nautilair, remote drive blowers, moisture separators, packaged units, CP blowers, Nasty Gas™ models and special built (EO) products are guaranteed for one full year from date of shipment for workmanship and material defect to the original purchaser only. Should the blower fail, If failure is determined to be workmanship or material defect related, we will at our option repair or replace the blower.
3. **Parts Policy** - AMETEK Rotron spare parts and accessories are guaranteed for three months from date of shipment for workmanship and material defect to the original purchaser only. If failure is determined to be workmanship or material defect related we will at our option repair or replace the part.

**Corrective Action** - A written report will be provided indicating reason(s) for failure, with suggestions for corrective action. Subsequent customer failures due to abuse, misuse, misapplication or repeat offense will not be covered. AMETEK Rotron will then notify you of your options. Any failed unit that is tampered with by attempting repair or diagnosis will void the warranty, unless authorized by the factory.

**Terms and Conditions** - Our warranty covers repairs or replacement of regenerative blowers only, and will not cover labor for installation, outbound and inbound shipping costs, accessories or other items not considered integral blower parts. Charges may be incurred on products returned for reasons other than failures covered by their appropriate warranty. Out-of-warranty product and in warranty product returned for failures determined to be caused by abuse, misuse, or repeat offense will be subject to an evaluation charge. Maximum liability will in no case exceed the value of the product purchased. Damage resulting from mishandling during shipment is not covered by this warranty. It is the responsibility of the purchaser to file claims with the carrier. Other terms and conditions of sale are stated on the back of the order acknowledgement.

## Installation Instructions for SL, DR, EN, CP, and HiE Series Blowers

1. **Bolt It Down** - Any blower must be secured against movement prior to starting or testing to prevent injury or damage. The blower does not vibrate much more than a standard electric motor.
2. **Filtration** - All blowers should be filtered prior to starting. Care must be taken so that no foreign material enters the blower. If foreign material does enter the blower, it could cause internal damage or may exit at extremely high velocity.

Should excessive amounts of material pass through the blower, it is suggested that the cover(s) and impeller(s) be removed periodically and cleaned to avoid impeller imbalance. Impeller

imbalance greatly speeds bearing wear, thus reducing blower life. Disassembling the blower will void warranty, so contact the factory for cleaning authorization.

- Support the Piping** - The blower flanges and nozzles are designed as connection points only and are not designed to be support members.

Caution: Plastic piping should not be used on blowers larger than 1 HP that are operating near their maximum pressure or suction point. Blower housing and nearby piping temperatures can exceed 200°F. Access by personnel to the blower or nearby piping should be limited, guarded, or marked, to prevent danger of burns.

- Wiring** - Blowlers must be wired and protected/fused in accordance with local and national electrical codes. All blowlers must be grounded to prevent electrical shock. Slo-Blo or time delay fuses should be used to bypass the first second of start-up amperage.
- Pressure/Suction Maximums** - The maximum pressure and/or suction listed on the model label should not be exceeded. This can be monitored by means of a pressure or suction gage (available from Rotron), installed in the piping at the blower outlet or inlet. Also, if problems do arise, the Rotron Field representative will need to know the operating pressure/suction to properly diagnose the problem.
- Excess Air** - Bleed excess air off. DO NOT throttle to reduce flow. When bleeding off excess air, the blower draws less power and runs cooler.

**Note:** Remote Drive (Motorless) Blowlers - Properly designed and installed guards should be used on all belts, pulleys, couplings, etc. Observe maximum remote drive speed allowable. Due to the range of uses, drive guards are the responsibility of the customer or user. Belts should be tensioned using belt gauge.

Maintenance Procedure

**When properly piped, filtered, and applied, little or no routine maintenance is required. Keep the filter clean. Also, all standard models in the DR, EN, CP, and HiE series have sealed bearings that require no maintenance. Bearing should be changed after 15,000 to 20,000 hours, on average. Replacement bearing information is specified on the chart below.**

Bearing Part Number	Size	Seal Material	Grease	Heat Stabilized
510217 510218 510219	205 206 207	Polyacrylic	Nye Rheotemp 500 30% +/- 5% Fill	Yes – 325 F
510449 516440 516648	203 202 307	Buna N	Exxon Polyrex Grease	NO
516840 516841 516842 516843 516844 516845 516846 516847	206 207 208 210 309 310 311 313	Buna N	Exxon Polyrex Grease	NO

## Troubleshooting

		POSSIBLE CAUSE	OUT OF WARRANTY REMEDY ***
IMPELLER DOES NOT TURN	Humming Sound	<ol style="list-style-type: none"> <li>* One phase of power line not connected</li> <li>* One phase of stator winding open</li> <li>Bearings defective</li> <li>Impeller jammed by foreign material</li> <li>Impeller jammed against housing or cover</li> <li>** Capacitor open</li> </ol>	<ol style="list-style-type: none"> <li>Connect</li> <li>Rewind or buy new motor</li> <li>Change bearings</li> <li>Clean and add filter</li> <li>Adjust</li> <li>Change capacitor</li> </ol>
	No Sound	<ol style="list-style-type: none"> <li>* Two phases of power line not connected</li> <li>* Two phases of stator winding open</li> </ol>	<ol style="list-style-type: none"> <li>Connect</li> <li>Rewind or buy new motor</li> </ol>
IMPELLER TURNS	Blown Fuse	<ol style="list-style-type: none"> <li>Insufficient fuse capacity</li> <li>Short circuit</li> </ol>	<ol style="list-style-type: none"> <li>Use time delay fuse of proper rating</li> <li>Repair</li> </ol>
	Motor Overheated Or Protector Trips	<ol style="list-style-type: none"> <li>High or low voltage</li> <li>* Operating in single phase condition</li> <li>Bearings defective</li> <li>Impeller rubbing against housing or cover</li> <li>Impeller or air passage clogged by foreign material</li> <li>Unit operating beyond performance range</li> <li>Capacitor shorted</li> <li>* One phase of stator winding short circuited</li> </ol>	<ol style="list-style-type: none"> <li>Check input voltage</li> <li>Check connections</li> <li>Check bearings</li> <li>Adjust</li> <li>Clean and add filter</li> <li>Reduce system pressure/vacuum</li> <li>Change capacitor</li> <li>Rewind or buy new motor</li> </ol>
	Abnormal Sound	<ol style="list-style-type: none"> <li>Impeller rubbing against housing or cover</li> <li>Impeller or air passages clogged by foreign material</li> <li>Bearings defective</li> </ol>	<ol style="list-style-type: none"> <li>Adjust</li> <li>Clean and add filter</li> <li>Change bearings</li> </ol>
	Performance Below Standard	<ol style="list-style-type: none"> <li>Leak in piping</li> <li>Piping and air passages clogged</li> <li>Impeller rotation reversed</li> <li>Leak in blower</li> <li>Low voltage</li> </ol>	<ol style="list-style-type: none"> <li>Tighten</li> <li>Clean</li> <li>Check wiring</li> <li>Tighten cover, flange</li> <li>Check input voltage</li> </ol>
<p>* 3 phase units            ** 1 phase units            *** Disassembly and repair of new blowers or motors will void the Rotron warranty. Factory should be contacted prior to any attempt to field repair an in-warranty unit.</p>			

### **Blower Disassembly:**

**WARNING:** Attempting to repair or diagnose a blower may void Rotron's warranty. It may also be difficult to successfully disassemble and reassemble the unit.

- 1) Disconnect the power leads. **CAUTION:** Be sure the power is disconnected before doing any work whatsoever on the unit.
- 2) Remove or separate piping and/or mufflers and filters from the unit.
- 3) Remove the cover bolts and then the cover. **NOTE:** Some units are equipped with seals. It is mandatory that these seals be replaced once the unit has been opened.
- 4) Remove the impeller bolt and washers and then remove the impeller. **NOTE:** Never pry on the edges of the impeller. Use a puller as necessary.
- 5) Carefully note the number and location of the shims. Remove and set them aside. **NOTE:** If the disassembly was for inspection and cleaning the unit may now be reassembled by reversing the above steps. If motor servicing or replacement and/or impeller replacement is required the same shims may not be used. It will be necessary to re-shim the impeller according to the procedure explained under assembly.

- 6) Remove the housing bolts and remove the motor assembly (arbor/housing on remote drive models).
- 7) Arbor disassembly (Applicable on remote drive models only):
  - a) Slide the bearing retraining sleeve off the shaft at the blower end.
  - b) Remove the four (4) screws and the bearing retaining plate from the blower end.
  - c) Lift the shaft assembly far enough out of the arbor to allow removal of the blower end snap ring.
  - d) Remove the shaft assembly from the arbor.
  - e) If necessary, remove the shaft dust seal from the pulley end of the arbor.

*Muffler Material Replacement:*

- 1) Remove the manifold cover bolts and them manifold cover.
- 2) The muffler material can now be removed and replaced if necessary. On blowers with fiberglass acoustical wrap the tubular retaining screens with the fiberglass matting before sliding the muffler pads over the screens.
- 3) Reassemble by reversing the procedure.

**NOTE: On DR068 models with tubular mufflers it is necessary to remove the cover and impeller accessing the muffler material from the housing cavity.**

*Blower Reassembly:*

- 1) Place the assembled motor (assembled arbor assembly for remote drive models) against the rear of the housing and fasten with the bolts and washer.
- 2) To ensure the impeller is centered within the housing cavity re-shim the impeller according to the procedure outlined below.
- 3) If blower had a seal replace the seal with a new one.
- 4) Place the impeller onto the shaft making sure the shaft key is in place and fasten with the bolt, washer and spacer as applicable. Torque the impeller bolt per the table below. Once fastened carefully rotate the impeller to be sure it turns freely.
- 5) Replace the cover and fasten with bolts.
- 6) Reconnect the power leads to the motor per the motor nameplate.

<b>Bolt Size</b>	<b>Torque Pound-Force-Foot</b>
<b>1/4-20</b>	<b>6.25 +/- 0.25</b>
<b>5/16-18</b>	<b>11.5 +/- 0.25</b>
<b>3/8-16</b>	<b>20.0 +/- 0.5</b>
<b>1/2-13</b>	<b>49.0 +/- 1</b>
<b>5/8 -11</b>	<b>90.0 +/- 2</b>

*Impeller Shimming Procedure:*

WARNING: This unit may be difficult to shim. Extreme care may be exercised.

Tools Needed: Machinist's Parallel Bar  
Vernier Caliper with depth measuring capability  
Feeler gauges or depth gauge

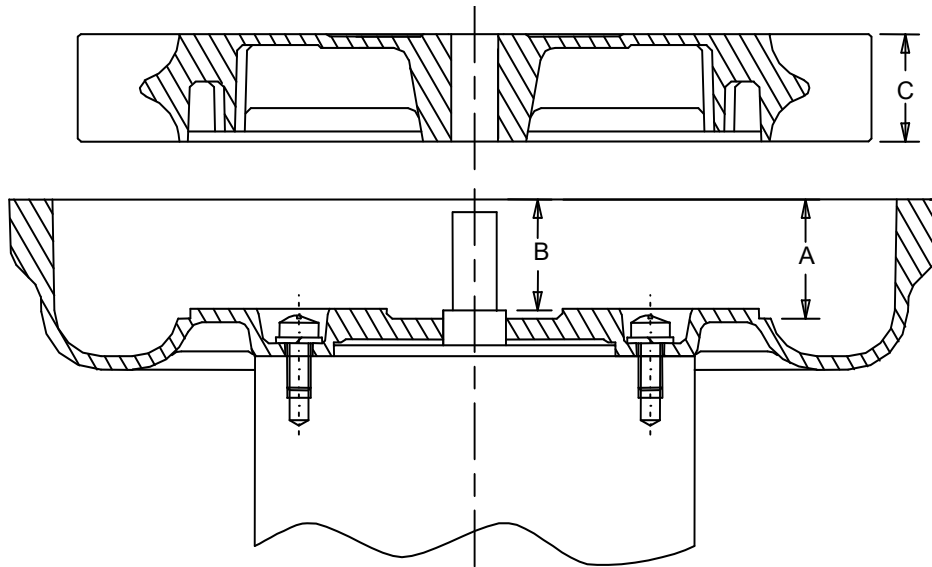
Measure the Following:

- Distance from the flange face to the housing (A)
- Distance from the flange face to the motor shaft shoulder (B)
- Impeller Thickness (C)

Measurements (A) and (B) are made by laying the parallel bar across the housing flange face and measuring to the proper points. Each measurement should be made at three points, and the average of the readings should be used.

$$\text{Shim Thickness} = B - (A+C)/2$$

After the impeller installation (step #4 above) the impeller/cover clearance can be checked with feeler gauges, laying the parallel bar across the housing flange face. This clearance should nominally be  $(A-C)/2$ .

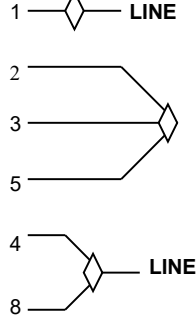
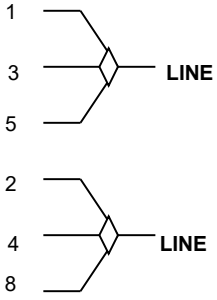


# WIRING DIAGRAMS, TEFC and ODP MOTORS

## A. 1Ø, 6 WIRE

**115 VAC**

**230 VAC**

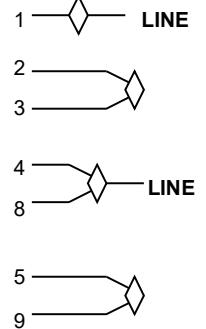
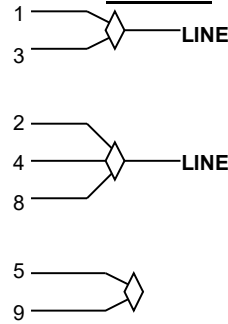


INTERCHANGE LEADWIRES 5 & 8 to REVERSE ROTATION

## B. 1Ø, 7 WIRE

**115 VAC**

**230 VAC**

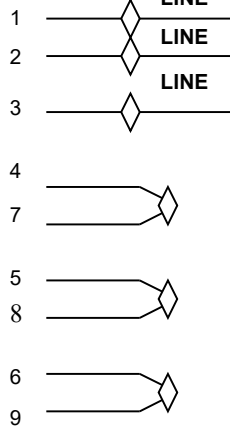
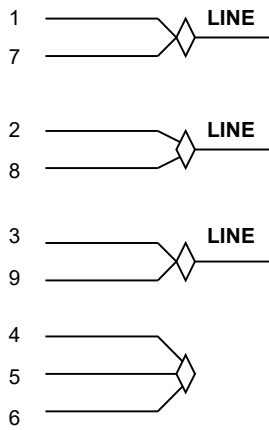


INTERCHANGE LEADWIRES 5 & 8 to REVERSE ROTATION

## C. 3Ø, 9 WIRE

**230 VAC**

**460 VAC**

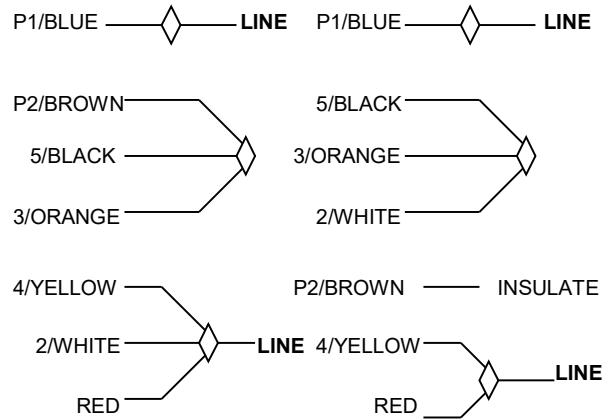


INTERCHANGE ANY TWO LEAD LINES TO REVERSE ROTATION

## D. 1Ø, EMERSON 1/8 HP MOTOR

**115 VAC**

**230 VAC**

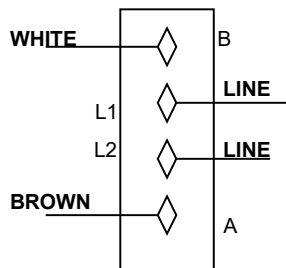
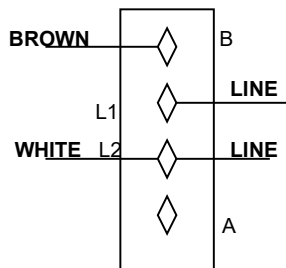


INTERCHANGE RED AND BLACK TO REVERSE ROTATION

## E. 1Ø, SPA DUTY WITH TERMINAL STRIPS

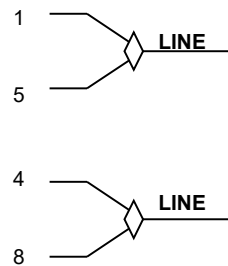
**LOW 115 VAC**

**HIGH 230 VAC**



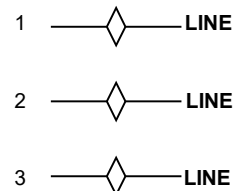
## F. 1Ø, 230 VAC

**SINGLE VOLTAGE**



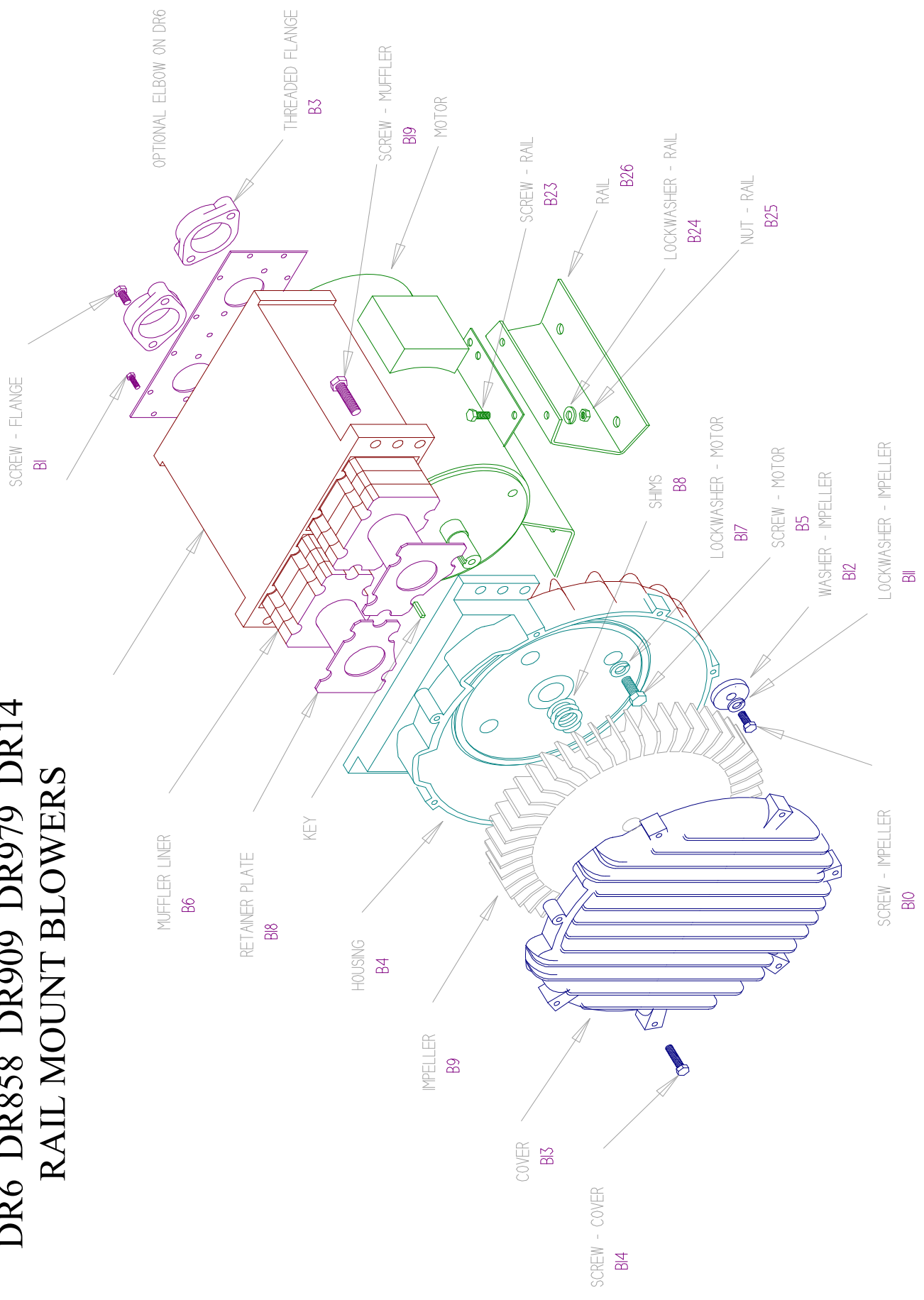
INTERCHANGE LEAD WIRES 5 & 8 TO REVERSE ROTATION

## G. 3Ø, 575 VAC



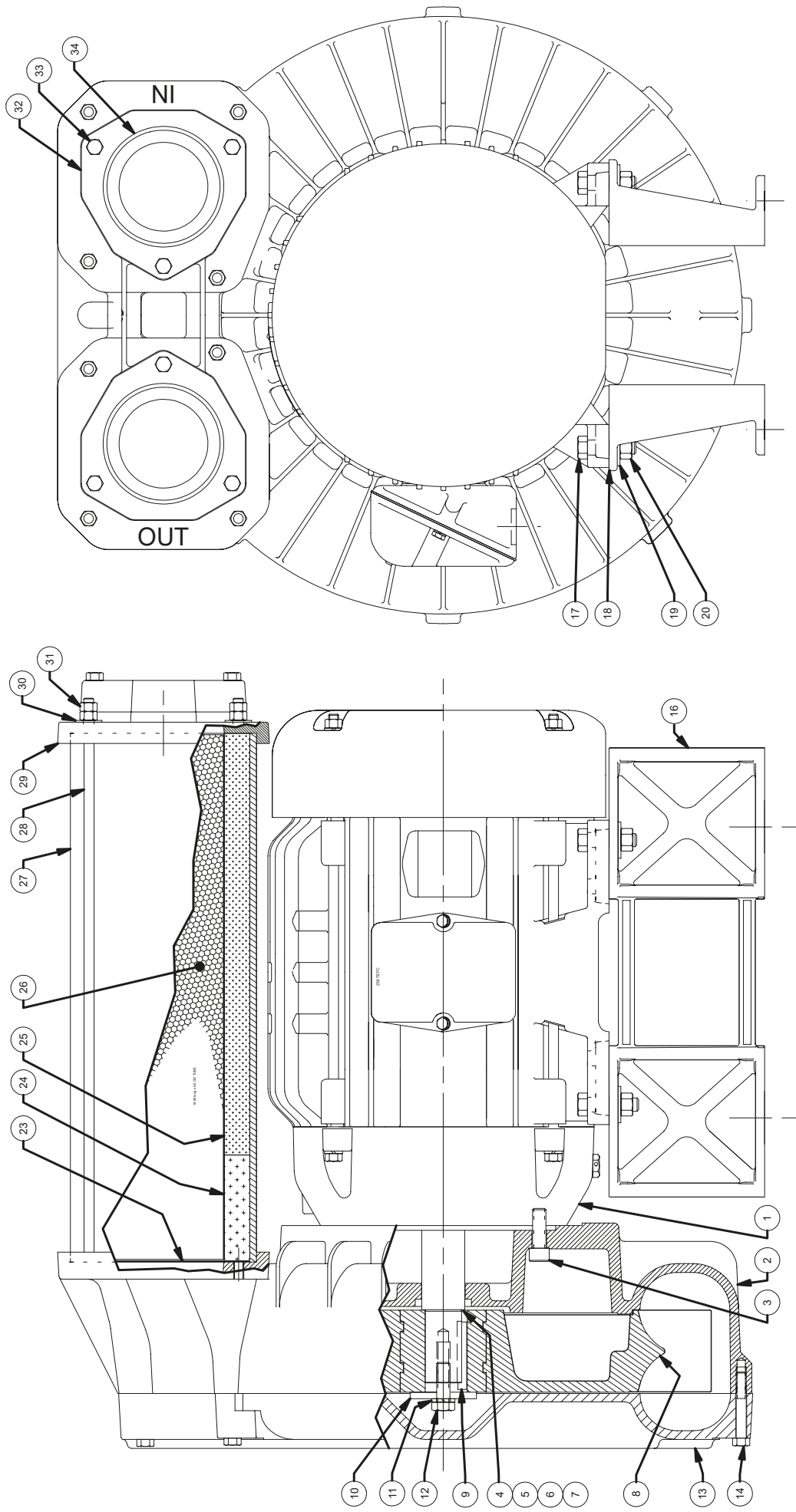
INTERCHANGE ANY TWO LEAD LINES TO REVERSE ROTATION

# ASSEMBLY DIAGRAM DR6 DR858 DR909 DR979 DR14 RAIL MOUNT BLOWERS





# ASSEMBLY DIAGRAM "B"



**DR 6/858/909/979/14**

**Service and Parts Manual**

Model:

Part No.:

**Parts Breakdown**

<b>DR6</b>	<b>DR858 - Rail</b>	<b>DR858 - Base</b>	<b>DR909 - Rail</b>	<b>DR909 - Base</b>	<b>DR909 - Rail</b>	<b>DR909 - Base</b>	<b>DR909 - Rail</b>	<b>DR909 - Base</b>	<b>DR909 - Rail</b>	<b>DR909 - Base</b>	<b>DR909 - Rail</b>	<b>DR909 - Base</b>	<b>DR909 - Rail</b>	<b>DR909 - Base</b>	<b>DR909 - Rail</b>	<b>DR909 - Base</b>	<b>DR14</b>
027578	038738	038735	038620	038622	038620	038622	081737	081737	081737	081737	081737	081737	081737	081737	081737	081737	081737
027579	038740	038736	038621	038623	038621	038623	081739	081739	081739	081739	081739	081739	081739	081739	081739	081739	081739
027600	038742	038737	038625	038626	038625	038626	081738	081738	081738	081738	081738	081738	081738	081738	081738	081738	081738
036212	038743	080173	080300	080183	080300	080183	081744	081744	081744	081744	081744	081744	081744	081744	081744	081744	081744
038071	080022	080172	038633														080451
																	080612

Item No.	Qty.	Req'd Description																	
M3	1	Key Motor Shaft	510212	511532	511532	511532	511532	511532	511532	511532	511532	511532	511532	511532	511532	511532	511532	511532	511532
B1	6	Screw, Flange	(4 pcs) 420065	(4 pcs) 155067	(4 pcs) 155067	140016	140016	140016	140016	140016	140016	140016	140016	140016	140016	140016	140016	140016	140016
B3	2	Flange	478341	511614	511614	529912	529912	529912	529912	529912	529912	529912	529912	529912	529912	529912	529912	529912	529912
	2	Screen, Flange Guard	511479	Not Used	Not Used	Not Used	Not Used	Not Used	Not Used	Not Used	Not Used	Not Used	Not Used	Not Used	Not Used	Not Used	Not Used	Not Used	Not Used
		Elbow 90°	See Next Page	Not Used	Not Used	Not Used	Not Used	Not Used	Not Used	Not Used	Not Used	Not Used	Not Used	Not Used	Not Used	Not Used	Not Used	Not Used	Not Used
B4	1	Housing	515497	515410	515410	515356	552409	552409	552409	552409	552409	552409	552409	552409	552409	552409	552409	552409	552409
B5	4	Screw, Hsg /Motor	251792	155034	155034	140014	140014	140014	140014	140014	140014	140014	140014	140014	140014	140014	140014	140014	140014
B6		Muffler Material	Not Used	(7 pcs) 551736	(7 pcs) 551736	(10 pcs) 551738	(10 pcs) 551738	(10 pcs) 551738	(10 pcs) 551738	(10 pcs) 551738	(10 pcs) 551738	(10 pcs) 551738	(10 pcs) 551738	(10 pcs) 551738	(10 pcs) 551738	(10 pcs) 551738	(10 pcs) 551738	(10 pcs) 551738	(10 pcs) 551738
		Muffler Material	Not Used	(2 pcs) 551737	(2 pcs) 551737	(2 pcs) 551739	(2 pcs) 551739	(2 pcs) 551739	(2 pcs) 551739	(2 pcs) 551739	(2 pcs) 551739	(2 pcs) 551739	(2 pcs) 551739	(2 pcs) 551739	(2 pcs) 551739	(2 pcs) 551739	(2 pcs) 551739	(2 pcs) 551739	(2 pcs) 551739
	2	Muffler Screen guard	Not Used	Not Used	Not Used	551730	551730	551730	551730	551730	551730	551730	551730	551730	551730	551730	551730	551730	551730
B8	*	Shim .002"	272703	511547	511547	511547	511547	511547	511547	511547	511547	511547	511547	511547	511547	511547	511547	511547	511547
	*	Shim .005"	272704	511548	511548	511548	511548	511548	511548	511548	511548	511548	511548	511548	511548	511548	511548	511548	511548
	*	Shim .010"	272705	511549	511549	511549	511549	511549	511549	511549	511549	511549	511549	511549	511549	511549	511549	511549	511549
	*	Shim .020"	272706	511550	511550	511550	511550	511550	511550	511550	511550	511550	511550	511550	511550	511550	511550	511550	511550
B9	1	Impeller	515484	515249	515249	552431	552431	552431	552431	552431	552431	552431	552431	552431	552431	552431	552431	552431	552431
B10	1	Bolt, Impeller	251791	120210	120210	140015	140015	140015	140015	140015	140015	140015	140015	140015	140015	140015	140015	140015	140015
B11	1	Lockwasher, Impeller	251787	251788	251788	251788	251788	251788	251788	251788	251788	251788	251788	251788	251788	251788	251788	251788	251788
B12	1	Washer, Impeller	Not Used	511529	511529	Not Used	Not Used	Not Used	Not Used	Not Used	Not Used	Not Used	Not Used	Not Used	Not Used	Not Used	Not Used	Not Used	Not Used
B13	1	Cover	515488	515247	515247	515359	515359	515359	515359	515359	515359	515359	515359	515359	515359	515359	515359	515359	515359
B14	8	Screw, Cover	155170	140016	140016	140016	140016	140016	140016	140016	140016	140016	140016	140016	140016	140016	140016	140016	140016
B15	1	Eye Bolt	Not Used	140019	140019	Not Used	Not Used	Not Used	Not Used	Not Used	Not Used	Not Used	Not Used	Not Used	Not Used	Not Used	Not Used	Not Used	Not Used
B16	1	Spacer, Impeller Bolt	478336	515555	515555	511529	511529	511529	511529	511529	511529	511529	511529	511529	511529	511529	511529	511529	511529
		Shaft Sleeve	Not Used	Not Used	Not Used	Not Used	Not Used	Not Used	Not Used	Not Used	Not Used	Not Used	Not Used	Not Used	Not Used	Not Used	Not Used	Not Used	Not Used
B17	4	Lockwasher, Housing	251788	Not Used	Not Used	Not Used	Not Used	Not Used	Not Used	Not Used	Not Used	Not Used	Not Used	Not Used	Not Used	Not Used	Not Used	Not Used	Not Used
B18	2	Screen, Muffler	Not Used	551723	551723	551725	551725	551725	551725	551725	551725	551725	551725	551725	551725	551725	551725	551725	551725
	2	Finger guard	Not Used	Not Used	Not Used	551730	551730	551730	551730	551730	551730	551730	551730	551730	551730	551730	551730	551730	551730
B19	6	Bolt, Muffler Hsg/Hsg	Not Used	155025	155025	155025	155025	155025	155025	155025	155025	155025	155025	155025	155025	155025	155025	155025	155025
B19A	4	Bolt, Muffler Hsg/Hsg	Not Used	120214	120214	Not Used	Not Used	Not Used	Not Used	Not Used	Not Used	Not Used	Not Used	Not Used	Not Used	Not Used	Not Used	Not Used	Not Used
B20	1	Muffler Housing	Not Used	550019	550017	529932	529932	529932	529932	529932	529932	529932	529932	529932	529932	529932	529932	529932	529932
	1	Muffler Discrete	522948	Not Used	Not Used	Not Used	Not Used	Not Used	Not Used	Not Used	Not Used	Not Used	Not Used	Not Used	Not Used	Not Used	Not Used	Not Used	Not Used
	2	Bolt, Motor/Muffler	Not Used	Not Used	Not Used	Not Used	Not Used	Not Used	Not Used	Not Used	Not Used	Not Used	Not Used	Not Used	Not Used	Not Used	Not Used	Not Used	Not Used
	2	Lockwasher, Motor/Mu	Not Used	Not Used	Not Used	Not Used	Not Used	Not Used	Not Used	Not Used	Not Used	Not Used	Not Used	Not Used	Not Used	Not Used	Not Used	Not Used	Not Used
	2	Washer, Motor/Muffler	Not Used	Not Used	Not Used	Not Used	Not Used	Not Used	Not Used	Not Used	Not Used	Not Used	Not Used	Not Used	Not Used	Not Used	Not Used	Not Used	Not Used

**OBSOLETE**

**NEW**

**OBSOLETE**

**OBSOLETE**

B23	4	Bolt, Rail	251791	12007	Not Used	See Next Page	Not Used	140016	See Next Page	120256
B24	4	Lockwasher Rail	251787	251787	Not Used	251787	Not Used	251787	See Next Page	251788
	8	Washer Rail/Motor	Not Used	Not Used	Not Used	See Next Page	Not Used	(8) 155091	See Next Page	Not Used
B25	4	Nut, Rail	251789	251789	Not Used	251789	Not Used	251789	See Next Page	155070
B26	2	Rail Mounting	478338	595301	Not Used	See Next Page	Not Used	551658	See Next Page	551658

Model	Part #	Motor	Wiring Diagram	Specific Parts	Bearing, Rear (M1)	Bearing, Impeller End (M2)
DR6D89	027578	500291	C	Elbow - not used	510217	510218
DR6D86	027579	500292	G			
DR6K72	027600	500293	C			
DR6D5	036212	510459	F	Elbow - (1 pc) 120153		
HiE6D89	038071	529325	C			
DR858AY72W	038738	511570	C			
DR858AY86W	080172	515568	G			
DR858AY86X	080173	515568	G			
HiE858AY72W	080022	529599	c			
DR858BB72W	038740	511571	C			
DR858BB86W	038742	515567	C			
HiE858BB72W	038743	529600	C			
DR858BB72X	038735	511571	C			
DR858AY72X	038736	511570	C			
DR858BB86X	038737	515567	G			
DR909BE72W	038620	<b>553286</b>	C	B23 (4 pcs) 140016		
DR909BB72W	038621	511571	C	(16 pcs) 155091		
DR909BE86W	038625	<b>TBD</b>	G	B26 (2 pcs) 595301		
DR909BB86W	080300	515567	G			
HiE909BE72W	038633	529601	C	B23 (4 pcs) 120256 (8 pcs) 155091 B26 (2 pcs) 516242	516840	516844
DR909BE72X	038622	<b>553066</b>	C	Note 511572 replaced by 553286 with cut down fins		
DR909BB72X	038623	511571	C			
DR909BE86X	038626	<b>TBD</b>	G	(note was 511601 but that motor no longer fits)		
DR909BB86X	080183	515567	G			
DR909BE72W	081737	<b>553286</b>	C	Note 511572 replaced by 553286 with cut down fins		
DR909BB72W	081738	511571	C	(note was 511601 but that motor no longer fits)		
DR909BE86W	081739	<b>TBD</b>	G			
DR909BB86W	081744	515567	G			
DR979BE86W	080702	551605	G	B4 = 551383, B15 = 140019		
DR979BE72W	080704	551604	C	B19A = Not used, B23 = 155095, B26 = 595301 B24 = (4pcs) 251787 & (8 pcs) 155091, B25 = 595301, B20 = 551422		
DR979BE72W	080632	551603	C	B4 = 551560 B15 = Not used B19A = 155070, B23 = 120256 B26 = 551658 B24= (4 pcs) 251788 & (8 pcs) 120211, (4) 155091, B20 = 551422 B25 = 155070		
DR979BH72W	080718	551635	C			
DR14DW72MW	038750	516096	C		516844	516846
DR14DW86MW	038751	516097	G			
DR14BH72MW	038752	510463	C		516842	516844
DR14BH86MW	038753	511511	G			

Model	Part #	Motor	Wiring Diagram	Specific Parts	Bearing, Rear (M1)	Bearing, Impeller End (M2)
DR14DT72MW	080451	551037	C			
DR14DT86MW	080612	516100	G			
HiE14DW72MW	038759	529603	C		516844	516846

**Use Assembly Diagram "B" for non obsolete DR14**

**DR 14**  
**Service and Parts Manual**

Model:

Part No.:

DR14  
081476  
081479  
081483  
081497

DR14  
081480  
081484

DR14  
038752  
038753  
  
OBSOLETE

**Parts Breakdown**

REF #	QTY	Description	See Below	See Below	DR14	DR14
1	1	Motor	See Below	See Below		
2	1	Housing	552309	552304		511532
3	4	Housing to mtr bolts	120256	155025		140016
4	*	Shim	515991	511547		529912
5	*	Shim	515992	511548		Not Used
6	*	Shim	515993	511549		Not Used
7	*	Shim	515994	511550		515983
8	1	Impeller	515509	515683		120205
9	1	Mtr shaft Key	155066	511532		Muffler Material (12 pcs) 551740
10	1	Impeller washer	515990	515990		Muffler Material (2 pcs) 551741
11	1	Impeller lockwasher	251788	251788		Muffler Screen guard 551744
12	1	Impeller bolt	155068	120251		Shim .002" 511547
13	1	Cover	515910	515910		* Shim .005" 511548
14	8	Cover screws	155069	155069		* Shim .010" 511549
15		Not used	Not used	Not used		* Shim .020" 511550
16	2	Mounting Rails	551658	551658		B9 1 Impeller 515683
17	4	Rail Bolts	120205	120205		B10 1 Bolt, Impeller 120251
18	4	Rail spacers	Not used	Not used		B11 1 Lockwasher, Impeller 251788
19	4	Rail lockwashers	251788	251788		B12 1 Washer, Impeller Not Used
20	4	Rail -Nuts	155070	155070		B13 1 Cover 515910
21	4	Rail washers	155091	155091		B14 8 Screw, Cover 155069
22		Not used	Not used	Not used		B15 1 Eye Bolt 140019
23	2	Finger guard screen	552322	552322		B16 1 Spacer, Impeller Bolt 515990
24	2	Muffler foam (hi temp)	552328	552328		Shaft Sleeve Not Used
25	2	Muffler foam (regular)	552327	552327		B17 4 Lockwasher, Housing Not Used
26	2	Retainer	552332	552332		B18 2 Screen, Muffler Retaining, Right 551727
27	2	Muffler tube	552324	552324		2 Finger guard Not Used
28	8	Muffler Tie Rod	552325	552325		B19 6 Bolt, Muffler Hsg/Hsg 155067
29	1	Connector plate	552298	552298		B19A 4 Bolt, Muffler Hsg/Hsg 120214
30	8	Muffler washer	155091	155091		B20 1 Muffler Housing 550039
31	16	Muffler tie rod nuts	251789	251789		1 Muffler Discrete Not Used
						2 Bolt, Motor/Muffler Not Used

32	2	Flange	529912	529912	2	Lockwasher, Motor/Muffler	Not Used
33	6	Flange bolts	140016	140016	2	Washer, Motor/Muffler	Not Used
34		Flange Cap.	Not used	Not used	B23	Bolt, Rail	155025
35		Not used	Not used	Not used	B24	Lockwasher Rail	251788
36		Nameplate- Blower	Not used	Not used	8	Washer Rail/Motor	Not Used
37		Rotation Sticker	Not used	Not used	B25	Nut, Rail	155070
38		Not used	Not used	Not used	B26	Rail Mounting	551658
39							
40							
41							
42							

Model	Part #	Motor	Wiring Diagram	Specific Parts	Bearing, Rear (M1)	Bearing, Impeller End (M2)
DR14DW72MW	081476	516096	C			
DR14DW86MW	081479	516097	G		516844	516846
DR14BH72MW	081480	510463	C			
DR14BH86MW	081481	511511	G		516842	516844
DR14DT72MW	081483	551037	C			
DR14DT86MW	081484	516100	G		516844	516846
HiE14DW72MW	081497	529603	C			